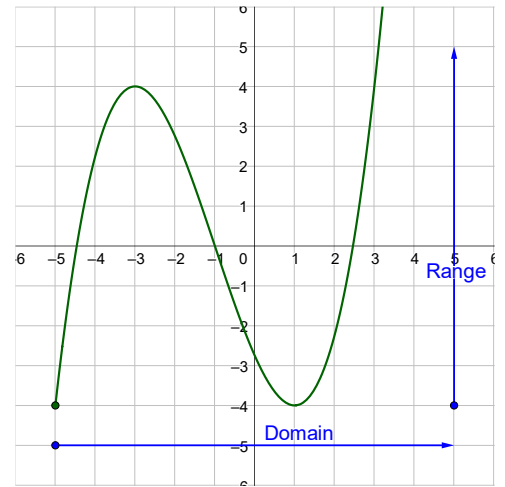


Precalculus

1-05 Graphs of Functions

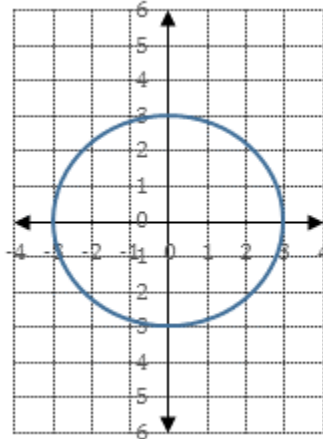
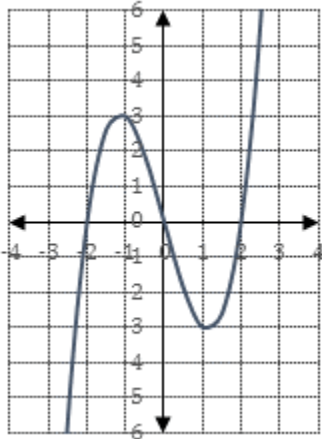
Domain and range from a graph

- Domain: part of _____ covered by graph
- Range: part of _____ covered by graph



Vertical Line Test

- A graph represents a function if _____
_____ line can touch _____ on the graph



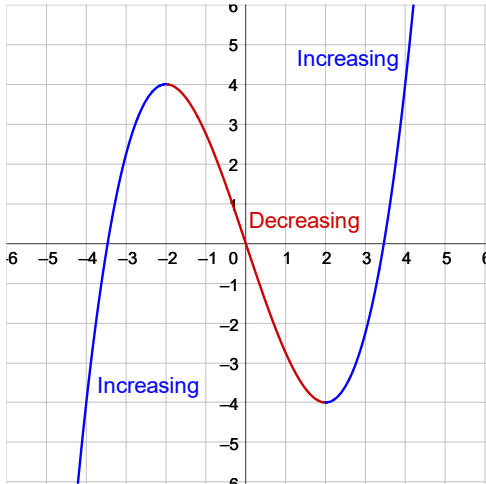
Zeros of a function

- x -value such that _____
- _____
- To find, make $f(x) = 0$ and solve for x

Find the zeros of $f(x) = 2x^2 - 7x - 30$

Analyzing Graphs

- Increasing (_____ from left to right)
- Decreasing (_____ from left to right)
- Constant (_____)
- Relative minimum (_____ point in area)
- Relative maximum (_____ point in area)

**Rate of Change**

- Average rate of change = _____ between 2 points